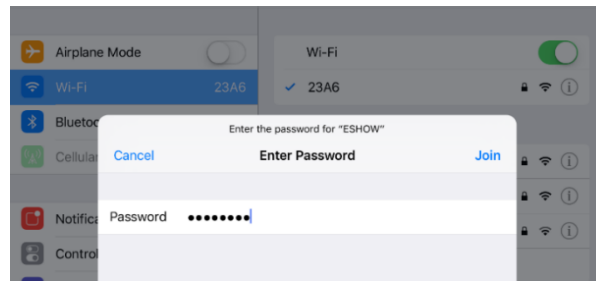
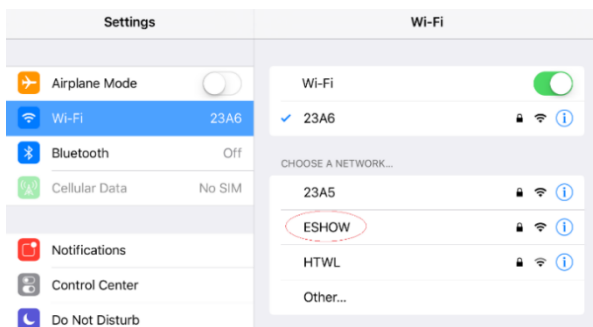


# Android, iOS User quick guide

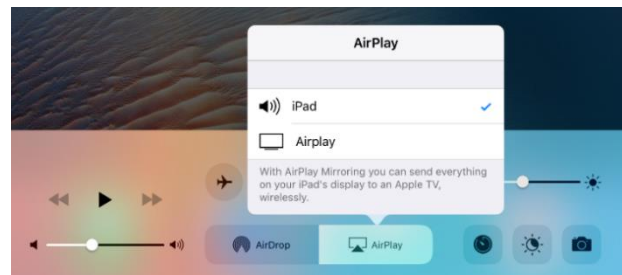
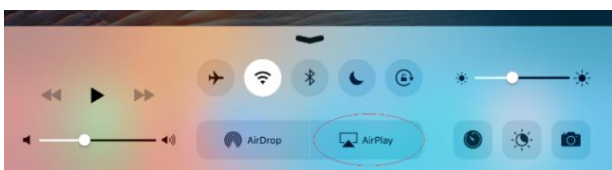
## iOS Mirroring

### Step1: Connect to the Base Unit wireless network

Open the setup menu and browse to Wi-Fi setting, connect to the specified SSID which is shown in the top left corner of the welcome screen. The default SSID and password are 'ESHOW' and '12345678'.



### Step2: Enable Airplay mirroring, start sharing



## Android mirroring

**Step1: Download and install ESHOW APP (<http://pnet-tech.com/download/>)**

**Requirements:**

- Android 5.0 and up

**Step2: Connect to Base Unit**

The SSID of Base Unit is 'ESHOW' by default, the password is '12345678'.

*Notes: Band is set to 5G by default, if the portable device can't find 'ESHOW', please change the Band to 2.4G via web browser (Login name and password are all 'admin' by default), or to use another portable device which supports 5G.*

**Step3: Open 'ESHOW', input the IP address of Base Unit or find the specified unit on auto discovered list**

**Step4: Start or stop mirroring**

